



# MCS 315

# Effective Unit Service In Rural Communities

# Course / Learning Objectives



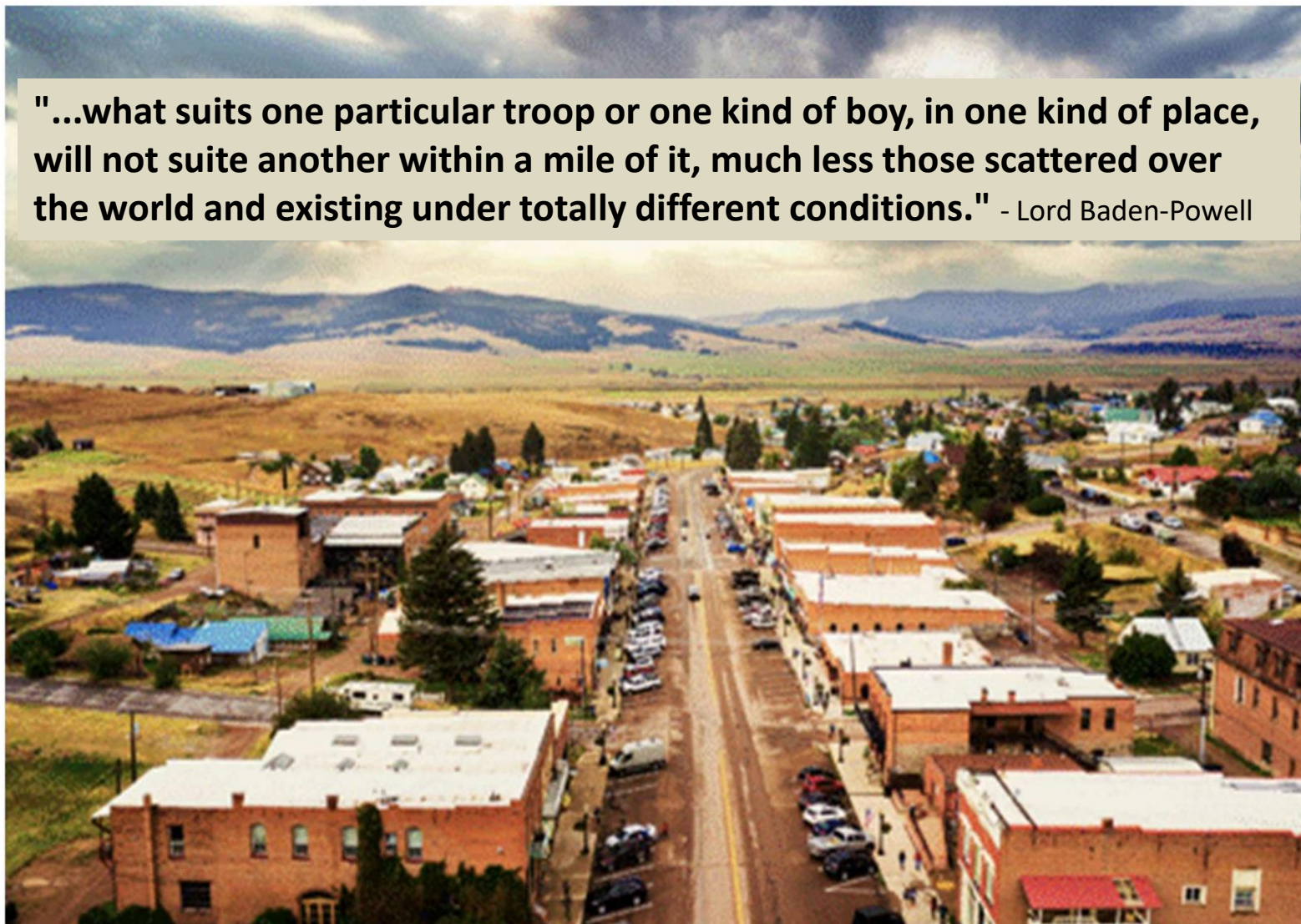
**At the end of this training a commissioner will be able to:**

- **Understand** the opportunities and challenges of working with rural units.
- **Learn** methods for recruiting leaders and Scouts in rural and distant communities.
- **Receive** and **share** methods to reduce the cost of Scouting.
- **Capture** methods for providing Scouting in small units.

# Rural Communities - the Heartland



**"...what suits one particular troop or one kind of boy, in one kind of place, will not suite another within a mile of it, much less those scattered over the world and existing under totally different conditions." - Lord Baden-Powell**



# A Different Approach



- **Time and commitment to earn trust.**
- **People who live in rural areas are self-sufficient and generous in their community.**
- **These folks are busy, often holding multiple jobs and volunteer positions.**

# People Considerations



- Be aware of Scouter's life events
- Respect cultures and lifestyles



# Recruiting in Rural Communities



- Focus on serving youth
- Locate previous Scouters
- Talk face to face
- Learn community history and culture
- Get to know community members

## Text Us

Please don't hesitate to text us at: [redacted] if you see anything that needs our attention. We want to make sure this campground is as relaxing as possible for our guests!

Thank You

## Text Us

(TRANSLATED FOR TEENAGERS)

sup? HMU at: [redacted] If you see anything that is sus or cringe like IDK a toilet that got REXT or something. TBH we High-Key tryna glow-up this campground. Can't stop won't stop until this place straight up slays. Need your help fam.

Ty

# Communication



- Be a People Person
- Listen to leaders and parents
- Empathize
- Be responsive and timely
- Encourage
- Provide immediate recognition

# Resolving Issues



- Stay Neutral and impartial
- Be available
- Be adaptable
- Alternative approaches





THE BIG  
PICTURE!



**E**

Explain

**D**

Demonstrate

**G**

Guide

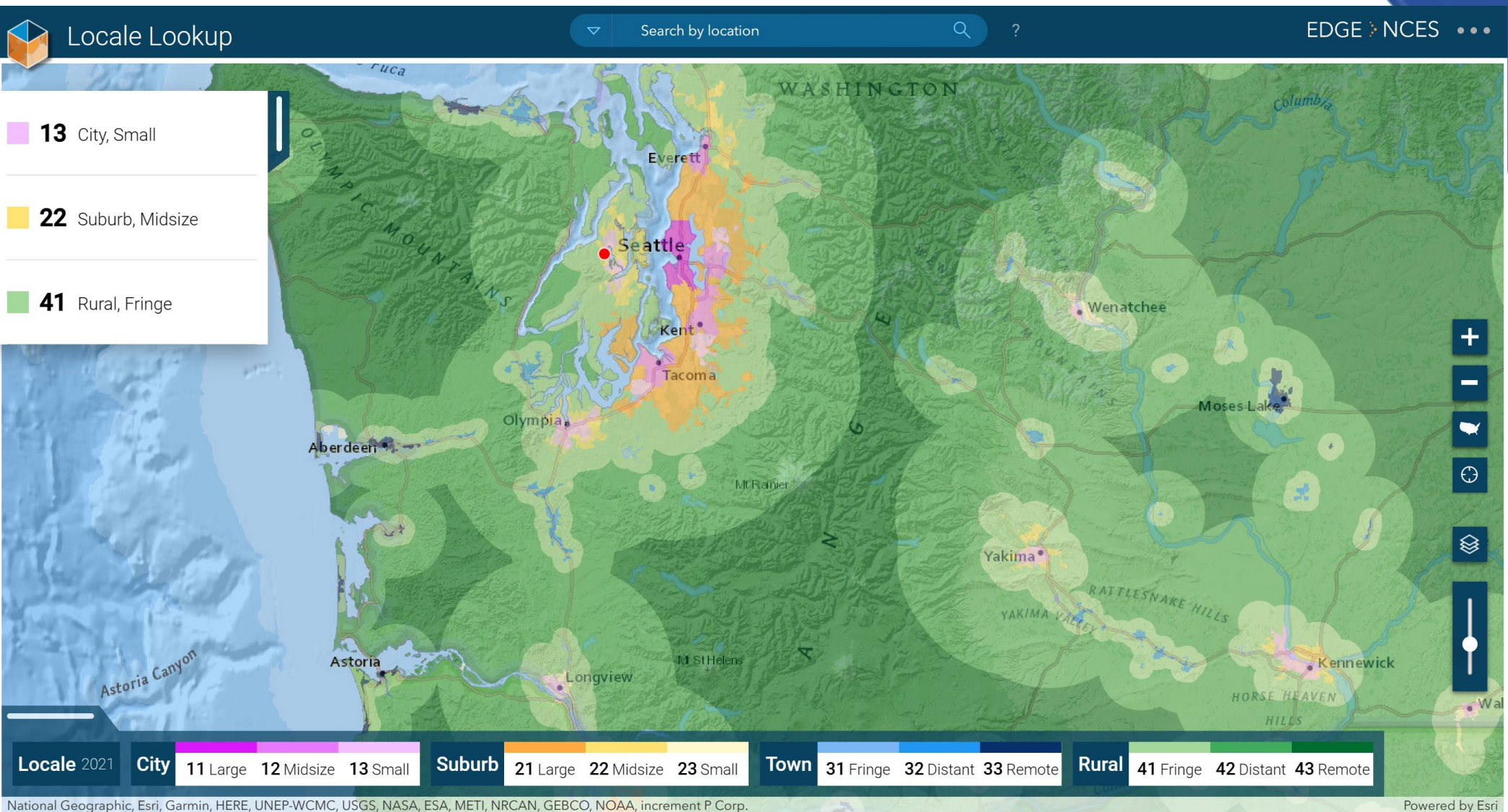
**E**

Enable



## [Locale Lookup \(ed.gov\)](https://nces.ed.gov/programs/maped/LocaleLookup/)

<https://nces.ed.gov/programs/maped/LocaleLookup/>





[Search For Schools and Colleges \(ed.gov\)](https://nces.ed.gov/globallocator/)  
<https://nces.ed.gov/globallocator/>



## Search for Schools and Colleges

State	Washington	City	Bremerton	<a href="#">Browse For City</a>	<b>Institutions</b> select any of interest (all)
Zip	98312	Distance	10	Miles from Zip	Public Schools <input type="checkbox"/>
Name					Private Schools <input checked="" type="checkbox"/>
Sort by	<input checked="" type="radio"/> Name <input type="radio"/> State <input type="radio"/> City				Colleges <input type="checkbox"/>
Search Finished			Results: 6		<a href="#">Search</a> <a href="#">Clear</a>

### Private Schools

< 0.5 miles	<a href="#">CHRIST THE KING LUTHERAN SCHOOL</a> 8065 CHICO WAY NW, BREMERTON, WA 98312 (360) 692-8799 - KITSAP COUNTY	Coed grades: PK - 8
< 0.5 miles	<a href="#">CROSSPOINT</a> 4012 CHICO WAY NW, BREMERTON, WA 98312 (360) 377-7700 - KITSAP COUNTY	Coed grades: KG - 12
< 0.5 miles	<a href="#">KITSAP ADVENTIST CHRISTIAN SCHOOL</a> 5088 NW TAYLOR RD, BREMERTON, WA 98312 (360) 377-4542 - KITSAP COUNTY	Coed grades: KG - 8
5 miles	<a href="#">OUR LADY STAR OF THE SEA CATHOLIC SCHOOL</a> 1516 5TH ST, BREMERTON, WA 98337 (360) 373-5162 - KITSAP COUNTY	Coed grades: PK - 8
5.6 miles	<a href="#">PEACE LUTHERAN SCHOOL</a> 1234 NE RIDDELL RD, BREMERTON, WA 98310 (360) 373-2116 - KITSAP COUNTY	Coed grades: PK - 8
6.1 miles	<a href="#">THE COTTAGE MONTESSORI SCHOOL</a> 215 NW SOLNAE PL, BREMERTON, WA 98311 (360) 692-1055 - KITSAP COUNTY	Coed grades: PK - KG

Private Schools

[Back To Top ↑](#)



## [Tax Exempt Organization Search Bulk Data Downloads | Internal Revenue Service \(irs.gov\)](https://www.irs.gov/charities-non-profits/tax-exempt-organization-search-bulk-data-downloads)

<https://www.irs.gov/charities-non-profits/tax-exempt-organization-search-bulk-data-downloads>

IRS | Help | News | English | Charities & Nonprofits | Tax Pros

File | Pay | Refunds | Credits & Deductions | Forms & Instructions | Search

[Home](#) / [File](#) / [Charities and Nonprofits](#) / [Search for Charities](#) / [Search for Tax Exempt Organizations](#) / Tax Exempt Organization Search

### Tax Exempt Organization Search

Select Database <sup>?</sup> | Search By <sup>?</sup> | Search Term <sup>?</sup> XX-XXXXXXX or XXXXXXXXX

Form 990-N (e-Postcard) | Employer Identification Number (EIN) | Enter EIN Number

City: Bremerton | State: Washington | Country: United States

RESET | SEARCH | [Search Tips](#)

Showing 1-25 results of 308

EIN	Organization Name	City	State	Country
45-2838080	<a href="#">2FATIGUE FUNDRAISING</a>	Bremerton	Washington	United States
27-1204761	<a href="#">32 PEARLS OF HOPE</a>	Bremerton	Washington	United States
91-2135532	<a href="#">4 H CLOTHING AND TESTILES</a>	Bremerton	Washington	United States

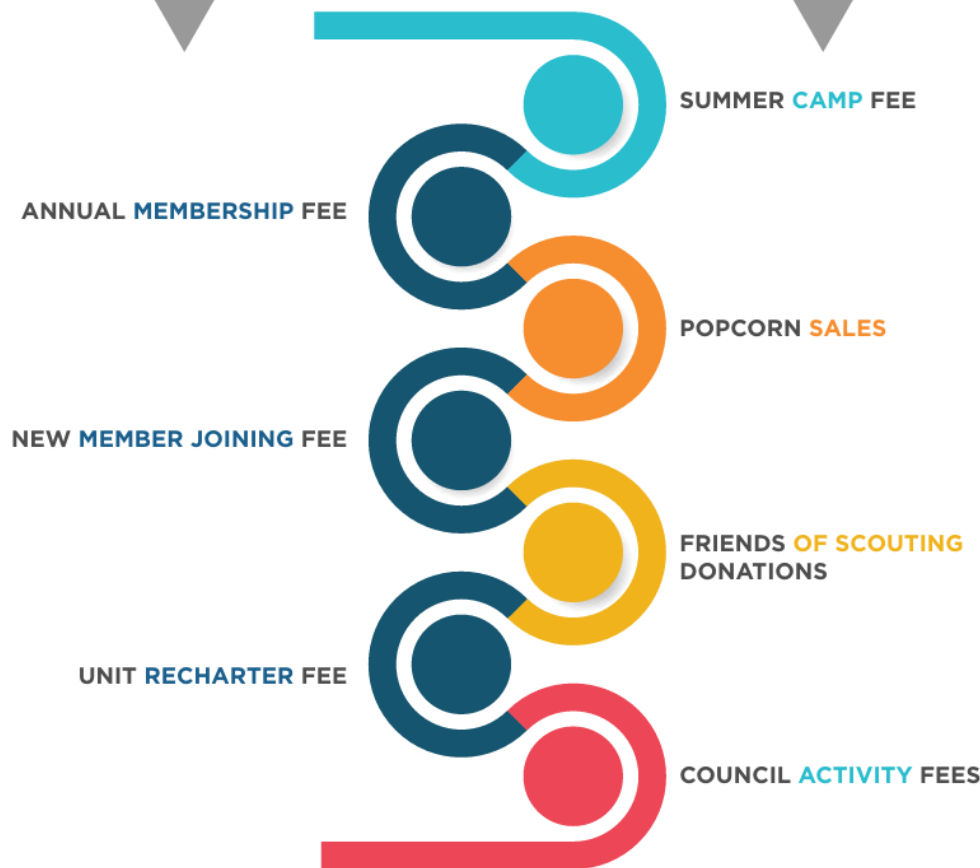


# SCOUTING FEES

*Scouting is great value for the money. No one can truly put a price tag on the leadership and character building that comes from participating in Scouting programs. But where does your money go and how does it help support Scouting?*

The Boy Scouts of America national office receives:

The Greater St. Louis Area Council receives:



*Money received by the Boy Scouts of America national office goes towards funding the cost of essential services, including liability insurance for those participating in approved Scouting activities, program resources, safety standards, youth protection and personal safety training, and services to councils nationwide to sustain Scouting. These monies help to deliver the program of the BSA (through 260+ local councils) to chartered organizations that use the Scouting program to meet the needs of local youth.*

*Money received by your local Greater St. Louis Area Council provides for professional staff supervision, organization of new Scouting units, service for existing units, training of volunteer leaders, and maintenance of council camps. Fees also finance the operation of the local council service centers, where volunteer leaders can obtain literature, insignia, advancement badges, and other items vital to the program. In addition, the service centers maintain advancement and membership records.*

# Reducing Costs of Scouting



- Sharing resources
- T shirts/ Neckerchiefs
- Multiple units combining activities
- Camperships / Scholarships
- Remote meetings/ Virtual/ Hybrid

# Small Rural Unit Scouting Options



- Den aide or Denner instead of den chiefs
- Multi-aged dens
- Lone Cub Scouts, Scouts BSA
- Wagon-wheel troops, weekly patrol meetings, monthly troop meetings
- Technology options: virtual meetings, social media, shared drives
- Multi-Unit activities



# Learning Check



## Review this scenario and discuss as a class

Janet is the new Unit Commissioner for Firestart Council covering Faye county. None of the other Commissioners are in Faye county where 3 units are chartered. Janet has 3 years experience as a unit commissioner, and recently relocated with her family to start a new job at Acme. Janet has 2 older children; both have had the Scouting experience.

Faye county is sparsely populated but has 3 key employers that many residents work for: Acme auto parts, a manufacturing facility; The Refugee and Immigrant Center, temporary home to 500 families and Holy Divinity Bible College, a renowned theological school with 2000 students enrolled, though half are online. There is also a large retirement community in the county.

Janet has some key contacts at Acme, but needs a way to connect to the other big employers and community.

What are some strategies Janet can take to engage existing units and potentially expand Scouting in Faye County?

# Summary & Review



- Get to know the community and residents
- Build relationships and find leaders
- Spend time, build community trust
- Recognize
- Economize
- Be flexible





**Questions?  
Comments!**

