



CUB SCOUTS



What Every Cub Leader Should Know About the District

Chief Seattle Council Program and Training Conference
Saturday, October 23, 2021
Session 605, 2:45-3:45pm



BOY SCOUTS OF AMERICA®



CUB SCOUTS

Welcome and About Me!

Jim Schiechl

- Mt. Tahoma District Cub Roundtable Commissioner and incoming District Chair
- Cubmaster, Pack 506 in Covington
- Kent School District Administrator
- mt.tahoma.scouter@gmail.com



BOY SCOUTS OF AMERICA®



CUB SCOUTS

Our Objectives for this Session



Participants will be able to:

1. Identify the district they belong to (if in the Chief Seattle Council)
2. Find the contact info on the council website for the district
Key 3
3. Name the key functions of the various district groups and how each can support the pack
4. Identify next steps for what they will ask for from their district in the next month.





CUB SCOUTS

Introduce Yourself

Please share with us:

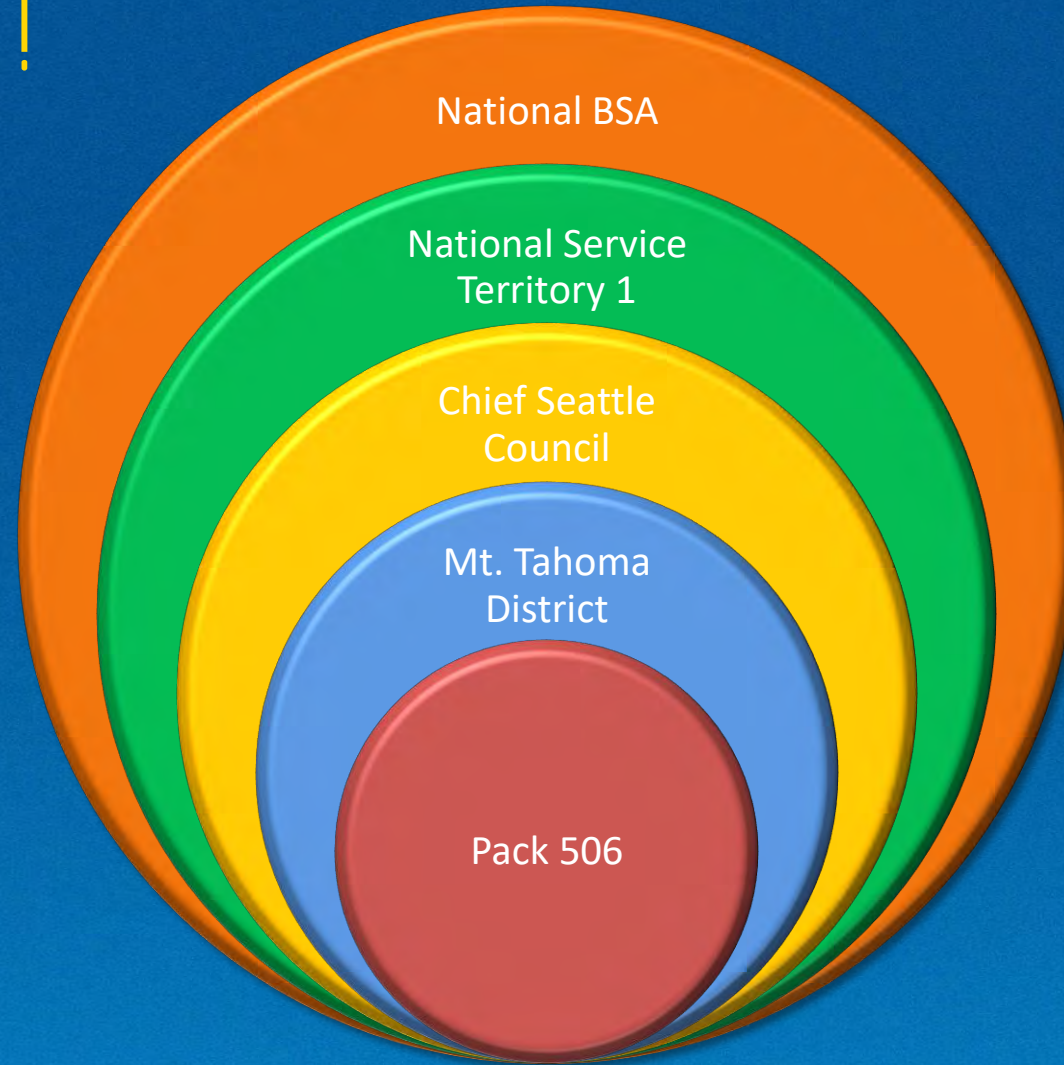
1. What is your name?
2. What is your unit and role?
3. What council are you in?
4. What district are you in?
5. Why did you choose this session?





CUB SCOUTS

The Focus of the Scouting Program is YOUR Unit!



BOY SCOUTS OF AMERICA®



CUB SCOUTS

Chief Seattle Council Districts

Chief Seattle Council delivers programs and serves youth and families through 8 geographic districts. In order to find out what is happening in your area, click on the district that best describes where you live.

[Alpine](#) - Cougar Mountain, Fall City, Issaquah, North Bend, Sammamish Plateau, Snoqualmie, Renton Highlands, and Newcastle.

[Aurora](#) - Lake Forest Park, North Seattle, Shoreline.

[Duwamish](#) - Beacon Hill, Burien, Capitol Hill, Central District, Des Moines, Normandy Park, Rainier Valley, SeaTac, South Seattle, Tukwila, Vashon Island, West Seattle, White Center.

[Kitsap](#) - Bainbridge Island, Seabeck, Crosby, Bremerton, Silverdale, Port Orchard, Belfair, Bangor, Erlands Point-Kitsap Lake, Indianola, Kingston, Manchester, Navy Yard City, Olalla, Parkwood, Poulsbo, Suquamish, Tracyton.

[Lake Shores](#) - Bellevue, Juanita, Kirkland, and Mercer Island.

[Mt. Olympus](#) - Clallam and Jefferson counties.

[Mt. Tahoma](#) - Auburn, Black Diamond, Covington, Kent, Newcastle, Maple Valley, Pacific, Renton, Skyway.

[Northern Trails](#) - Bothell, Carnation, Duvall, Kenmore, Redmond, Woodinville.



BOY SCOUTS OF AMERICA®



CUB SCOUTS

Chief Seattle Council Districts

BOY SCOUTS OF AMERICA
CHIEF SEATTLE COUNCIL

[Join Scouting!](#) [Donate](#) [Camping](#) [Calendar](#) [About](#) [MORE](#)

Program and Training Con

PTC 2021 will be held virtually on Saturday
PTC is an area-wide, one stop training opportunity for leaders

[Register Now!](#)

- Join Scouting!
- Donate
- Camping
- Calendar
- About
- Districts
- Resources
- Sitemap

Welcome to Chief Seattle Council Boy Scouts of America

Chief Seattle Council proudly serves over **11,000** boys and girls throughout the Puget Sound region with the time-tested leadership training program of Scouting. Chief Seattle Council enthusiastically meets new challenges head-on and continue to offer quality programming and services to the



BOY SCOUTS OF AMERICA®



CUB SCOUTS

Chief Seattle Council Districts



BOY SCOUTS OF AMERICA
CHIEF SEATTLE COUNCIL

[Join Scouting!](#)

[Donate](#)

[Camping](#)

[Calendar](#)

[About](#)

[MORE](#) ▾

Search



[Chief Seattle Council](#) > [About](#) > [Districts](#)

Districts

[Alpine](#)

Fall City, Issaquah, North Bend, Sammamish, Snoqualmie, portions of Newcastle, and the Renton Highlands.

[Aurora](#)

Lake Forest Park, North Seattle, Shoreline.

[Duwamish](#)

Beacon Hill, Burien, Capitol Hill, Central District, Columbia City, Des Moines, Hillman City, Madrona, Montlake, Normandy Park, Rainier Beach, Rainier Valley, SeaTac, Seattle, South Seattle, Tukwila, Vashon Island, West Seattle, White Center.

[Kitsap](#)

Bainbridge Island, Seabeck, Crosby, Bremerton, Silverdale, Port Orchard, Belfair, Bangor, Erlands Point-Kitsap Lake, Indianola, Kingston, Manchester, Navy Yard City, Olalla, Parkwood, Poulsbo, Suquamish, Tracyton.

[Lake Shores](#)

Bellevue, Juanita, Kirkland, and Mercer Island.

[Mt Olympus](#)

Clallam and Jefferson counties.

[Mt Tahoma](#)

Auburn, Black Diamond, Covington, Kent, Newcastle, Maple Valley, Pacific, Renton, Skyway.

[Northern Trails](#)

Bothell, Carnation, Duvall, Kenmore, Redmond, Woodinville.



BOY SCOUTS OF AMERICA®



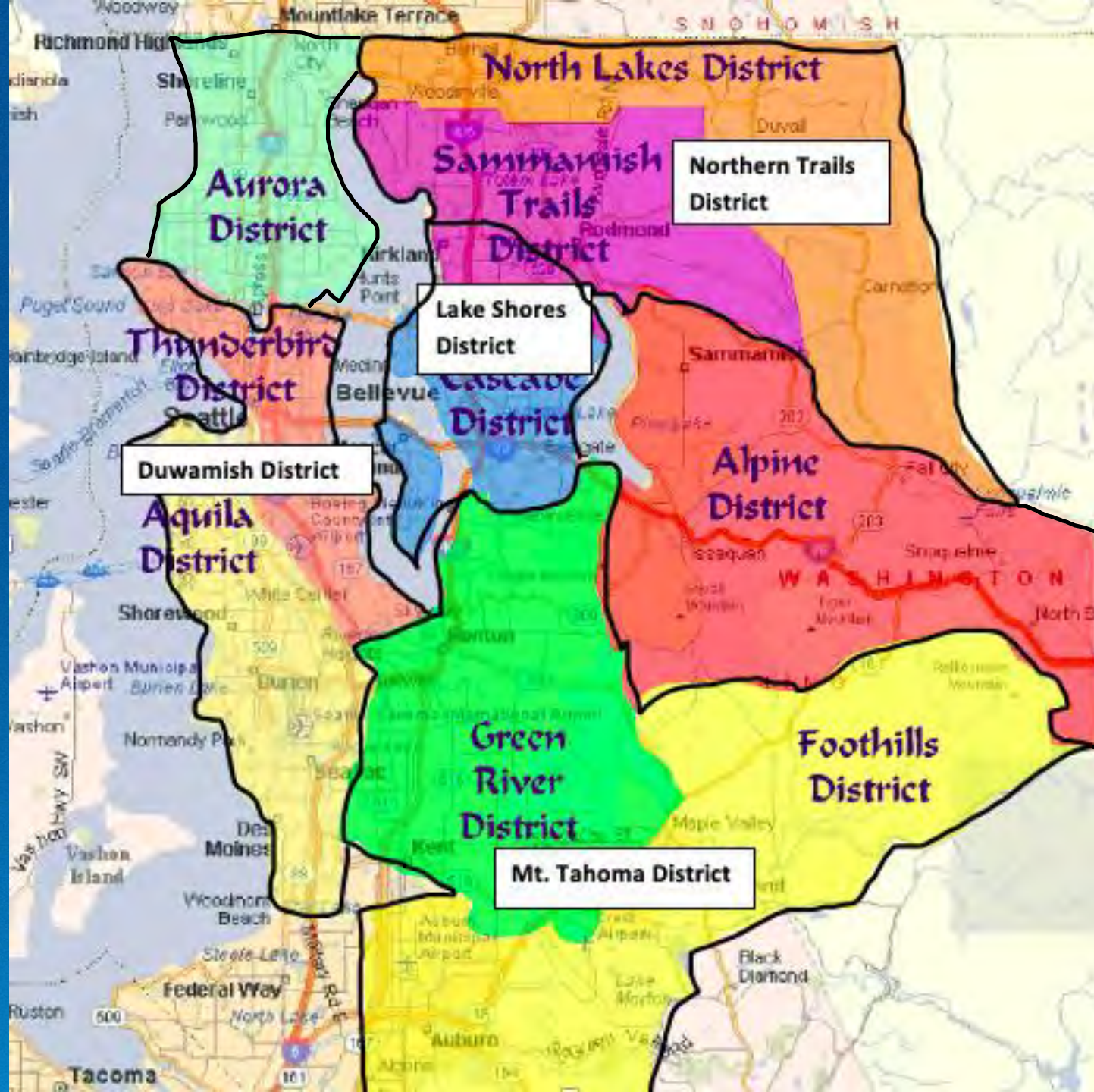
CUB SCOUTS

Chief Seattle Council Districts





CUB SCOUTS





CUB SCOUTS

District Key Three





CUB SCOUTS

Role of your District Executive



A professional scouter

Primary responsibility for establishing, growing, and supporting units

Serves as a liaison with the Council professional staff

A good source for policy questions





CUB SCOUTS

Role of your District Chair



A volunteer scouter

Responsible for coordinating the operations of the district.

Make sure other district-level volunteer positions are filled.

Supports the work of the various subcommittees of the district.

Represents the district on the Council Executive Board.





CUB SCOUTS

Role of your District Commissioner



A volunteer scouter

Overall responsibility for unit service.

Identifying, training, and supporting unit commissioners and Roundtable commissioners.

Coaching unit commissioners in skills for coaching unit leaders





CUB SCOUTS

District Committee



Made up of District Key Three, plus other volunteers:

- District Vice Chairs
- Subcommittee chairs
- Members-at-large
- Chartered Org Reps are all automatically members
- Anyone is welcome to attend!
- * Commissioners not technically members of the committee, unless dual registered

Provide programs, services, and support to units in the district



BOY SCOUTS OF AMERICA®



CUB SCOUTS

District Training Committee

- Plans a broad array of opportunities for leaders. They also can work with other neighboring districts to help you find a training that fits into your schedule if your district's offerings don't work.
- Cub-leader specific trainings include:
 - Position-specific training (den leader and assistant, cubmaster and assistant, pack committee member)
 - BALOO Outdoor Skills
 - Help with Youth Protection Training
 - Woodbadge (a council event, but your district training chair can get you set up!)





CUB SCOUTS

District Cub Leader Roundtable



Monthly training opportunity for all adult leaders in the district.

Starts with a joint session with announcements for all units.

Cub breakouts are designed for all leaders and parents. The goal is to **share** training, tips, and resources that help you be a better leader and improve the program for your Cubs.

Networking is a big part of Roundtable—you are not alone! Build a group of neighbors whom you can rely on for advice, ideas, and support.





CUB SCOUTS

District Membership Committee

Focused on creating new units and growing existing units.

They want to help you with:

- Recruiting and marketing materials
- Planning for joining night
- Helpers for recruiting events
- New ideas for recruiting
- Best practices in social media usage
- Welcoming new members



BOY SCOUTS OF AMERICA®



CUB SCOUTS

District Program Committee

The Program Committee plans activities for **district units that can enhance your Pack's** program.

- Cub Scout Day Camp
- Promoting Cub Summer Resident Camp
- Winter Klondike weekends
- Webelos overnights
- District Pinewood Derby
- Joint Pack-Troop events



Most districts are looking for additional ideas for Cub programming—**what would YOU like to see?**



BOY SCOUTS OF AMERICA®



CUB SCOUTS

District Advancement Committee



Mostly involved with Scouts BSA advancement (merit badge clinics and Eagle Scout projects/Boards of Review), but they do serve packs:

- o Staying up-to-date on any changes in adventure or rank requirements
- o Any policy questions that may arise concerning advancement.



BOY SCOUTS OF AMERICA®



CUB SCOUTS

Your Unit Commissioner

- The unit commissioner is a volunteer with experience as a unit leader who is assigned to your unit to be your liaison to the district.
- His or her job is to support you—they should be your primary contact for questions, help, guidance, or **problems. If your UC can't help, he or she will get you to the right person!**



BOY SCOUTS OF AMERICA®



CUB SCOUTS

Your Unit Commissioner



Your UC may contact you for **something called an “assessment.”** This IS NOT a test or evaluation. The goal is to help you identify what your pack does really well, and to also brainstorm areas where you might want to beef up your program. It is a way for your UC to get to know your pack and your needs and try to identify the resources the district has that will work best for you.





CUB SCOUTS

Your District Exists to Serve YOU!



The work we do is incredibly rewarding but can also be challenging. Your district exists to help connect you with the resources you need to provide the absolute best possible program to your Cub Scouts.

What do YOU need from YOUR district? What will you ask for this week?



BOY SCOUTS OF AMERICA®



CUB SCOUTS

Contact me if you have questions!

Jim Schiechl

mt.tahoma.scouter@gmail.com



BOY SCOUTS OF AMERICA®